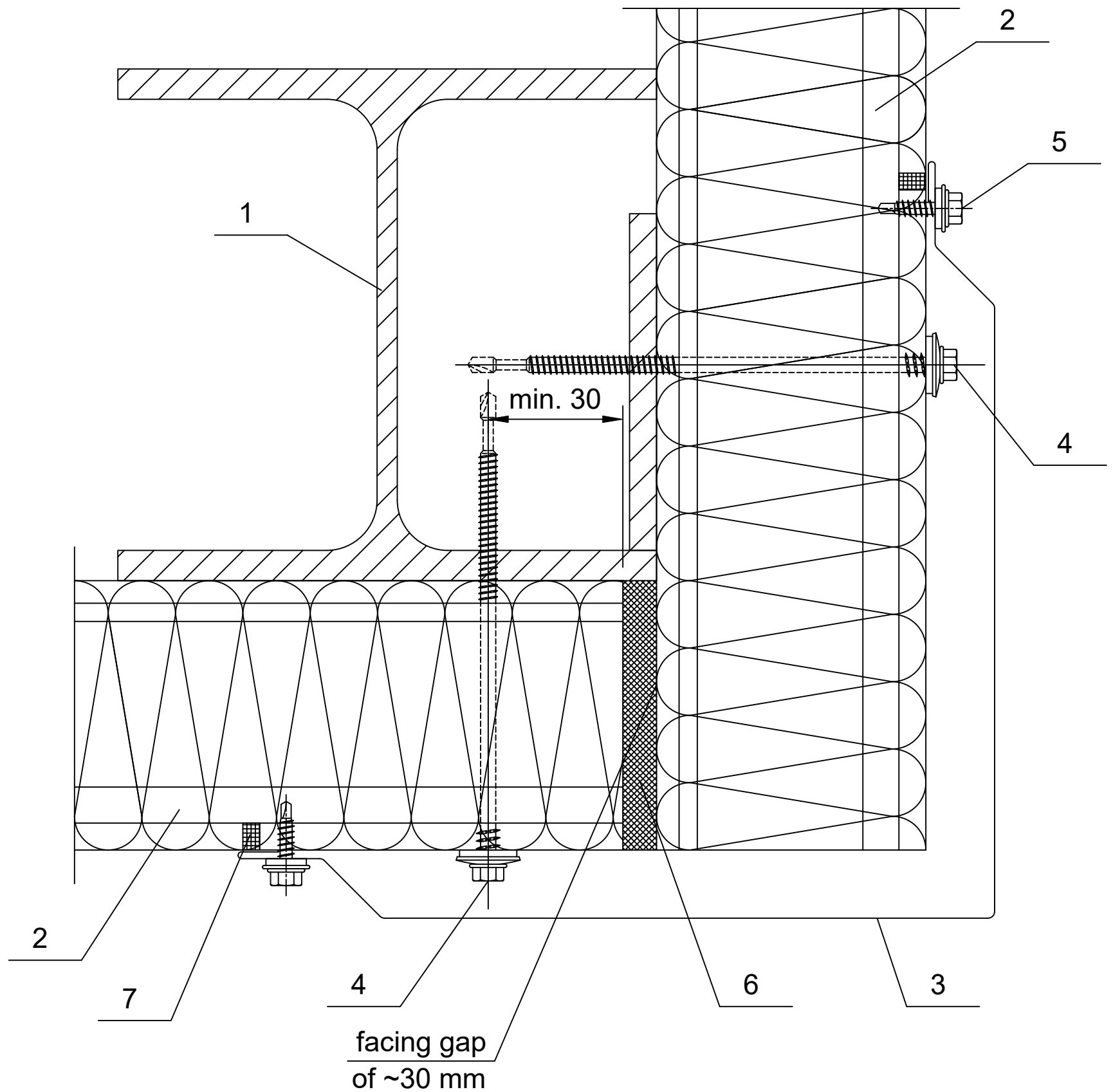


Date	Rev. date	Work nr.	Drw. nr.	Rev.
Drawn by Ruukki	Rev.	M30/S28	-	
Scale 1:2	Building		File nr. P2001/003-00040	



1. Steel column acc. to engineering design of the structure
2. Ruukki SP2D PIR
3. EA1B28 corner flashing
4. Panel fastener for hot-rolled column or for cold-bent column
5. L03 fastener (every 500 mm)
6. Impregnated polyurethane sealant or expanded foam
7. Permanently elastic sealing compound

* for structures with high requirements regarding
thermal insulation facing gap is ~30 mm;